



Lift **2023** off

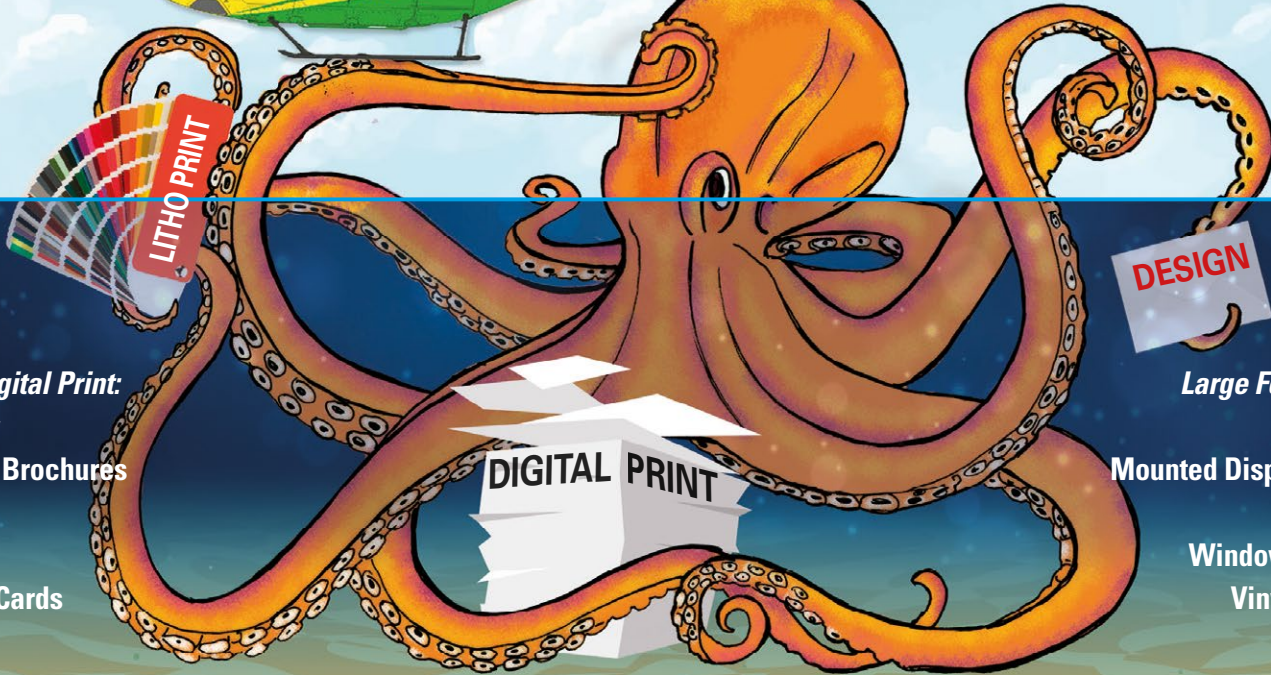
The latest news from your local air ambulance

Complete PRINT & DESIGN Service

Supporting Wiltshire Air Ambulance



Wiltshire
Air Ambulance
funded by you, flying for you



Litho & Digital Print:

Stationery
Corporate Brochures
Leaflets
Flyers
Business Cards

Large Format Print:

Posters
Mounted Display Boards
Banners
Window Graphics
Vinyl Graphics

**RALPH
ALLEN**

PRINT SOLUTIONS

1 Locksbrook Court, Locksbrook Road, Bath BA1 3EN

01225 461888 | enquiries@ralphallenpress.co.uk | www.ralphallenpress.co.uk

We have plenty to look forward to in 2023 as the charity continues to be there for the people of Wiltshire, Bath and surrounding areas.

It is a really difficult time for the country right now, with fuel and energy bills rising, along with inflation, contributing to this current cost of living crisis.

We remain ever grateful to our amazing donors and local businesses, who help us raise the £4 million it costs each year to keep our air ambulance flying and saving lives.

Wiltshire Air Ambulance has a very dedicated aircrew – consisting of pilots, critical care paramedics and doctors – who respond to emergencies, on average, three times a day, 365 days a year.

Last year we were called to 1,061 incidents and conveyed 263 patients to local hospitals. You can see a full breakdown of our work on page 4.

Our fundraising team has a wide variety of exciting events planned for the year.

Whether you're a hardcore runner, an adrenalin junkie or a family looking to support your local air ambulance, there really is something for everyone.

We're extremely proud of the many businesses and groups who continue to support us by holding their own events and community fundraisers.

I would also like to take this opportunity to thank all of our amazing volunteers who give

up their time to help support us and spread the message about our lifesaving work.

Throughout this Lift Off Magazine you will find many ways to help our essential lifesaving service, or you can visit our website, wiltshireairambulance.co.uk for more ideas.

We hope you will never need us, but if you do, we plan to be there.



Barbara Gray
Director of Income Generation and Communications



 01225 300536

 hello@wiltshireairambulance.co.uk

 Wiltshire Air Ambulance
Outmarsh • Semington • BA14 6JX

www.wiltshireairambulance.co.uk

registered charity number 1144097

Patron

Her Majesty The Queen Consort

Chairman

Chris Lear

Trustees

Kevin Basnett

Nick Charlton

Anna Cole

Mike Fellows

Rob Kevan

James Phipps

Graham Seaman

Philip Shepherd

Directors

David Philpott

Chief Executive Officer

Barbara Gray

Director of Income Generation and Communications

Danielle Friend

Director of Finance and Infrastructure

Giorgio Bondoni

Director of Aviation and Accountable Manager

Ambassadors

Lauren Booth

Alan Dedicoat

Tom Dunn

Suzanna Hext

Louise Hunt-Skelley

Paul Martin

Nick & Annette Mason

Stephanie Millward

Matt Perry

Shelley Rudman

2022 Incidents

All the below statistics are combined – Helicopter and Critical Care Cars

670 Helicopter

391 Critical Care Cars



1,061
total missions



351

cardiac emergencies



174

road traffic collisions



Top five hospitals we
airlifted/assisted
patients to:

Royal United
Hospital, Bath – 84

Southmead
Hospital, Bristol – 63

Great Western
Hospital, Swindon – 44

Bristol Royal Infirmary – 19

Salisbury District Hospital - 17

177

medical conditions
(including collapses
and strokes)



51

sporting incidents
of which 20 were
horse riding incidents



Missions Map

1 January - 31 December 2022



Scan the QR code to enlarge map



Note - 36 incidents were jointly attended by the helicopter and critical care cars, but for illustrative purposes this counts as one incident in that location.



David Betteridge raised an amazing £20,000 from the 2022 Foxy Calendar sales!



We hosted our first-ever Brew with the Crew event for Air Ambulance Week!



The NHS Ride of Thanks raised an incredible £1,218 in June.



Faresaver Buses have chosen to support us in 2022/23, raising £620 so far!



Emergency Awareness Training, on this occasion taking place at Oldfield Park Junior School in Bath.



West Wiltshire Conservative Club Jubilee Weekend raises over £400.



Middlewick Open Gardens raises record breaking amount - £84,000!

2022 was a very busy year with many events able to take place again after two years of uncertainty. A huge thank you to all our supporters!

What happens when you call 999?

Our critical care paramedic Paul Rock (Rocky) talks through how the aircrew at Wiltshire Air Ambulance operate from the moment a 999 call is made.

When we are needed

We are called if a patient needs our clinical skills in critical care and/or the additional drugs and specialist medical equipment we carry.

The speed of our aircraft can transport us to the scene quickly to treat and airlift a patient to hospital to receive further treatment.

Much of Wiltshire and Bath is rural, with places inaccessible by land ambulances, so our aircraft is pivotal in providing a speedy response.

If the aircraft is unable to fly due to weather restrictions or the incident would be quicker to reach by road we will travel in our Critical Care Cars.

Being 'tasked' to an incident

We are dispatched by the HEMS (Helicopter Emergency Medical Service) desk in Exeter, which is run by the South Western Ambulance Service NHS Foundation Trust (SWASFT).

The dispatchers monitor all calls to the ambulance service in the area and identify incidents where an air ambulance is needed.

The dispatchers listen into calls, phone back callers and get updates from ambulance crews on scene.

In addition, we can be called upon for support by land ambulances and other air ambulance crews, or liaise directly with the HEMS desk for incidents we locate.

Getting to the scene

We get the details of the incident and a grid or *what3words* reference for the mapping system.

The pilot will start up the aircraft while the paramedics plot the distance, duration and note any obstructions on the aviation map before going to the aircraft with a paper map and an iPad.

Before we lift off we will have an idea of where we will be landing but often we make the decision when we are overhead and can see the terrain.

When we fly at night our pre-flight planning is more in depth. The area of land required for landings is double the size of that for day flying so we want to identify a landing site before we lift off.

The paramedic who sits in the front left seat in the cockpit next to the pilot assists with navigation and radio communication with the HEMS desk.

The paramedic or doctor in the rear of the aircraft is the clinical lead and will manage the treatment of the patient and the scene.



Lift off and en-route to the incident

After the necessary safety checks have been completed, we lift from our helipad. On the flight we will be preparing a plan for the incident and treating the patient.

The HEMS desk will update us with any new information about the incident or the patient's condition.



Landing

We orbit the scene and look for any obstructions (e.g. high trees, power lines, animals, etc).

Most of the places we land are ad-hoc which means they haven't been surveyed by us in advance. We have landed in fields, school playgrounds, car parks, on motorways, at golf clubs, on football pitches and many other places.



On scene

Every incident is different but the majority are cardiac arrests, medical emergencies and road traffic collisions.

We are trained in critical care skills, which means we can give advanced drugs for analgesia, sedation or carry out surgical procedures on patients who have suffered traumatic injury.

We also carry blood products so we can give pre-hospital blood transfusions to critically ill or injured patients.

When deciding which hospital to airlift the patient to we take into consideration which is the most appropriate hospital for their needs (not always the nearest hospital) and discuss with our pilot the distance to the hospitals that we are considering.



Helicopter review

Wiltshire Air Ambulance has decided to continue with its existing helicopter until at least 2025, following a review by our charity's board and leadership team.

We have used our existing Bell 429 helicopter since becoming a standalone operation in 2015.

Wiltshire Air Ambulance director of income generation and communications Barbara Gray explained: "As part of our three-year strategy, we said we would hold a review into our helicopter. Given the unknown economic circumstances, we've decided it is not the right time to make a change.

"In 2025 the helicopter will be ten years old and that feels like the right milestone to review the situation again."



Quade's story

The day started with a picnic under the sun at the picturesque Nunney Castle, near Frome.

Several hours later Nick Ballinger and his partner Lauren Pinkett, from Southwick, Trowbridge, were at Bristol Royal Hospital for Children with their three-year-old son Quade.

"My world fell apart and all it took was a matter of seconds," says dad Nick, 33.

"We've been to Nunney Castle before and Quade had been around the water and understands the risks. However, on this occasion the moat at the 700-year-old castle was covered in thick green weeds and within a split-second Quade, clearly thinking it was grass, had taken a step and gone in.

"I was there with my family and a frantic search ensued. It all seemed to happen in slow motion and nothing really makes sense to you.

"My incredible brother-in-law Mark decided to dive into the water first and I was in quite quickly after him. It was cold and murky and around ten feet in depth.




"I actually went in with my eyes open expecting to be able to see something, but it was like I had jumped into a pint of Guinness.

"Seconds felt like hours, but suddenly Mark managed to brush his arm past Quade's clothing and then hauled him up to the surface."

Nick's mum Jayne has been a nurse for 41 years, albeit recently she had been off work due to long Covid, but that didn't stop her from using all of her experience in an emergency situation.

*"It could have been
so different without
Wiltshire Air
Ambulance"*





“We knew Wiltshire Air Ambulance was a charity but we didn’t realise it costs over £11,000 a day to carry out their lifesaving work. It’s such an important service and that’s why it’s vital they receive as much support as possible.”

Lauren - Quade’s mum (pictured below)

He adds: “Quade was limp, pale and blue, so my mum immediately began CPR and thankfully brought him back round.

However, he was still cold and shaking. I was expecting him to be screaming but he was just moaning really deeply. I was still fearing the worst.”

Paramedics from the ambulance service arrived and then Wiltshire Air Ambulance landed to help stabilise Quade before flying him and Nick straight to Bristol Hospital for Children in just ten minutes.

“You feel like you’re in safe hands when you’re on your way to hospital in a helicopter,” Nick said.

“All the panic begins to subside and that’s when it really hits you how lucky he has been and how lucky we are.”

Lauren, who was away in Bournemouth at the time, said: “Nick called with the striking words ‘don’t panic, the critical care team are here’. I work in the ambulance control room and knew exactly what that meant and how serious that can be.”

Quade spent six days at the hospital undergoing tests and briefly returned to hospital, this time at the RUH in Bath, with pneumonia.

Lauren, 33, said: “We’re very, very lucky. It could have been so different had Wiltshire Air Ambulance not been available that day. Quade was at the hospital in just ten minutes, when it would have been over an hour by road.

“You’re naïve; you never think you’ll need the service and then suddenly something like this happens.”



lifesaving lottery



Did you know that by playing our Lottery, you could be in with a chance of winning £1,000 each and every week of the year?

We also run a Superdraw, which could land players a rollover jackpot of £25,000; think what you could spend that on!

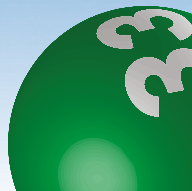
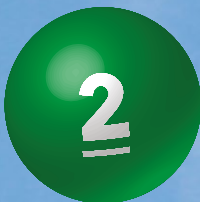
Importantly, with around 40,000 entries into our Lottery and Superdraw each week, it helps to contribute to fund one in every four missions. It costs just £1 a week to play our Lottery, with a weekly cash prize of £1,000 up for grabs and four additional winners banking £25 each.

For a further £1 you can also enter the Superdraw, which offers the chance for big prizes. Our Lottery began in 2009 and, up to this point, has generated over £11 million for the charity.

To sign up visit www.wiltshireairambulance.co.uk/lottery or scan the QR code on this page.



Up to
£25,000
Superdraw
jackpot!



Will you make a difference?

A gift in your Will costs nothing in your lifetime and means we can continue to save lives in the future.

On average one in four of our missions are paid for by gifts left to the charity in Wills.

We offer a service that enables individuals and couples to have their Will made for free, with three easy and accessible options:

- **Face to face with a solicitor**
- **At home with a trained Wills Counsellor**
- **Online**

Whichever option you choose, you will be able to complete a simple Will (or a pair of Wills in the case of a couple) at no cost to yourself.

If your estate is more complex there may be an additional fee to cover the additional time required to discuss your needs and draft your Will, however you will be advised of any costs upfront and are under no obligation to proceed.

You don't have to include Wiltshire Air Ambulance in your Will (though we hope that you will consider us, once you've provided for your loved ones).

Scan the QR code on this page to find out more, or visit wiltshireairambulance.co.uk/Wills.



Regular Giving

Could you support our lifesaving work by joining Wiltshire Air Ambulance's Regular Giving scheme?

We rely on the kind generosity of people like you to help us raise the £4 million needed each to keep us flying and saving lives. We are funded by you, flying for you.

What is 'Regular Giving'?

It's a regular donation made by direct debit, which is a simple, secure and effective way to support our lifesaving work.

You could choose to donate monthly, quarterly, bi-annually or simply yearly. The donation amount is up to you, we are grateful for whatever you are willing to give.

Why a regular donation?

More of your money goes directly to our lifesaving service, as regular giving direct debit admin costs are lower.

With reliable income that we can depend upon and predict, it means we are able to plan our finances more effectively.

Ultimately, the Regular Giving scheme puts you in control. You can choose how much to give and spread the cost of your support if you wish.

It's also easy to set up, change or cancel at any time.



How does it work?

It's simple to get signed up and can all be done online in a matter of minutes. All you need to do is decide how much you want to donate and how frequently.

Simply scan the QR code on this page or visit wiltshireairambulance.co.uk/savelives.

Then follow the on-screen instructions to complete the process and begin donating to Wiltshire Air Ambulance.

The benefit of your regular donation

- £3** could help us buy a box of 10 scalpels, used to perform lifesaving surgical procedures by our paramedics and doctors
- £17** could help us buy a ventilator circuit to deliver oxygen to our anaesthetised patients
- £25** could help us buy a lifesaving sling to stabilise a patient's pelvis and reduce bleeding

Without regular income from people like you, our lifesaving service couldn't continue to operate.

Upcoming events



5
April

Brew with the Crew
Back for 2023, here's your chance to enjoy a cuppa with our crew!



21
May

It's a Knockout!
A day full of inflatable fun for teams of ten at Melksham RFC.



3-4
June

Middlewick Open Gardens
Visit the gardens of our ambassadors Nick and Annette Mason.



18
June

DB Max Road Rampage
A cracking obstacle course with around 40 obstacles across varied terrain.



6
July

Wing Walk
Experience the thrill of flying at speed on the wings of a plane!



8-9
July

Race to the Stones
The UK's favourite ultramarathon along the UK's oldest path.



10
Sept

Skydive
Take to the skies and help save lives at Old Sarum airfield.



7
Oct

Charity Ball
Enjoy an evening of glitz at The De Vere Cotswold Water Park Hotel.



15
Oct

Bath Half Marathon
Don your running shoes and take on the historic city's half marathon!

Holding your own event?

Get in touch with our community team by scanning the QR code below.



Find out more and sign up on our website:
wiltshireairambulance.co.uk/events



Textile recycling

We have 75 recycling banks across Wiltshire where you can donate clothing and shoes. The items are then recycled and we receive at least £210 per tonne of clothing collected.



Become a volunteer

Whether you attend events, deliver talks, distribute our collection tins or help out in our charity shop, you will be a part of our amazing GroundCrew!



Shop online and raise funds!

Did you know you can raise funds for us at no extra cost to you when shopping online with sites such as EasyFundraising and Give as you Live?



Host a collection tin

During 2022, static tins within the community raised over £23,000 for our charity. If you are interested in having a collection tin at your business, get in touch!



Recycle4WAA

Turn your rubbish into donations with the schemes organised by the volunteers at Recycle4WAA! Find details about all the recycling schemes on their website.



Meetings with a difference

With meeting rooms overlooking the helipad and viewing point at our airbase, visitors will get a unique look behind the scenes at our lifesaving service.

Online Shop – order your merchandise today!

We have a Charity Shop in Devizes (see address details right) which sells high quality clothing, books, children's toys and has many more items to browse through.

We also have an Online Shop where you can purchase our charity merchandise.

To browse our full range, simply scan the QR code in the bottom corner of this page.

www.wiltshireairambulance.co.uk/shop

Visit our Charity Shop

Our newly refurbished charity shop in Devizes can be found at 2 Maryport Street, SN10 1AH.



PRICE LIST

1. Dog bandana	£3
2. Jute bag	£5
3. Travel mug	£9
4. Crew teddy	£6.50
5. Wooden heli	£6
6. Fridge magnets	£2
7. Keyrings	
a) Shopper bag	£3.50
b) Torch	£3.50
c) Trolley token	£1.50
d) Wilber keyring	£1.50

*prices correct at time of print and are subject to change, postage charges apply



1. Dog bandana



2. Jute bag



3. Travel mug



4. Crew teddy



5. Wooden heli



6. Fridge magnets



7. Keyrings





**BOOK YOUR NEXT HOLIDAY WITH
BARNES COACHES**

01793 821303 | barnescoaches.co.uk



Request a free copy
of our UK & European
Coach Holiday Brochure
on **01793 821303**



**We rely on your support to
continue our lifesaving service.**

Donate online now:
www.wiltshireairambulance.co.uk



**Wiltshire
Air Ambulance**

funded by you, flying for you